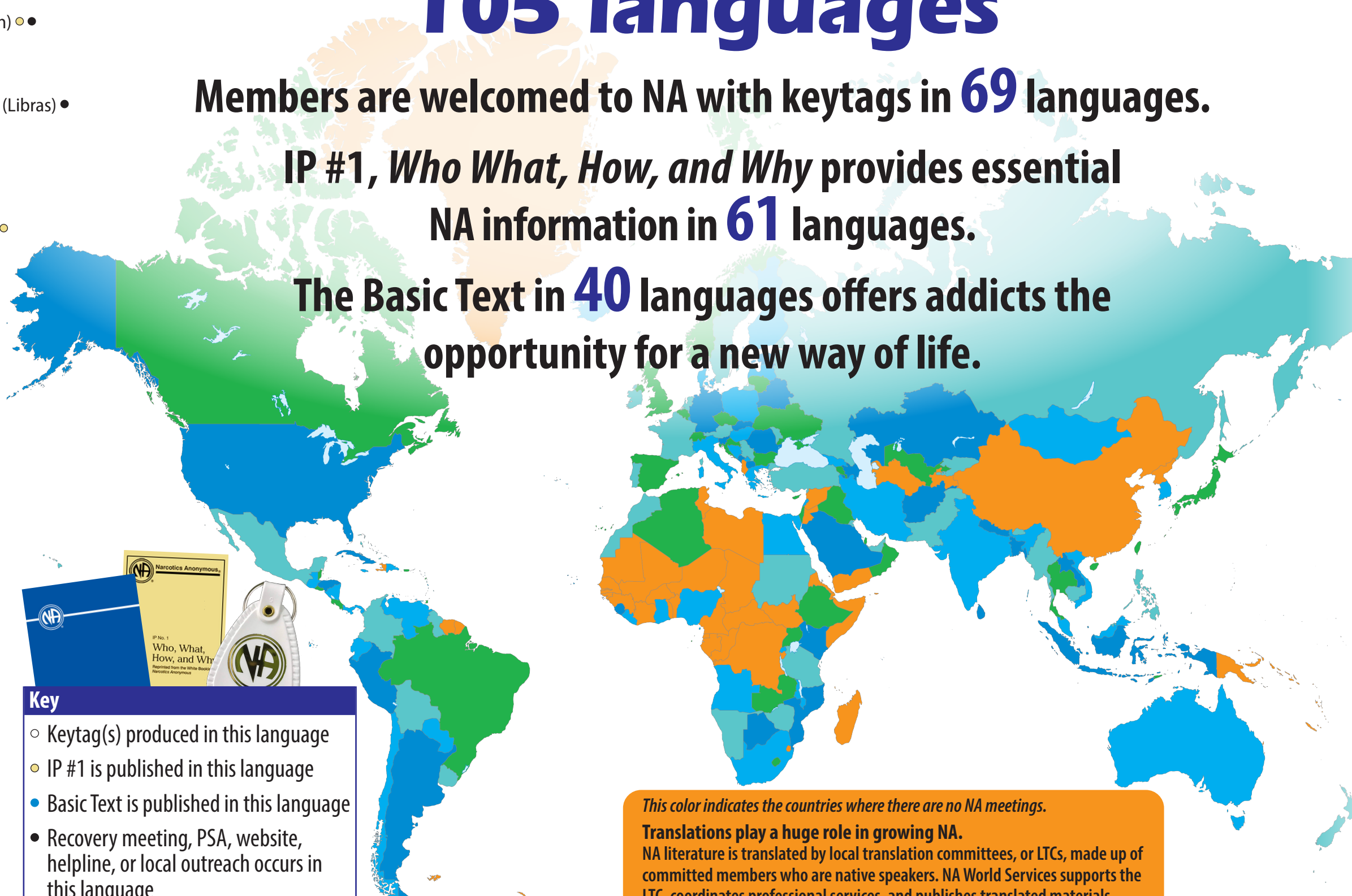


Carrying the Message in 105 languages

Members are welcomed to NA with keytags in **69** languages.

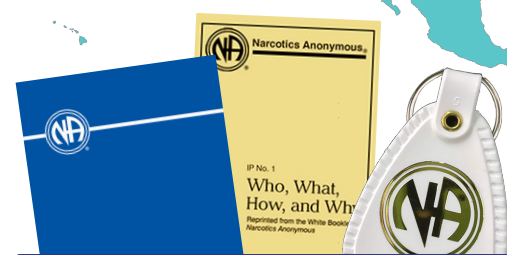
IP #1, *Who What, How, and Why* provides essential NA information in **61** languages.

The Basic Text in **40** languages offers addicts the opportunity for a new way of life.



- Afrikaans ○●●
- American Sign Lang. (ASL) ○●
- Amharic ○
- Anglicized English ○●
- Arabic ○●●
- Armenian ○●
- Assamese ●
- Azerbaijani ○●●
- Bengali ○●●
- Bengali (Bangladesh) ○●
- Blackfoot ○
- Bosnian ○●
- Braille ●●
- Brazilian Sign Lang. (Libras) ●
- Bulgarian ○●●
- CHamoru ○
- Catalan ●
- Cherokee ○
- Chinese ○●●
- Chinese Traditional ○
- Cree ●
- Croatian ○●●
- Czech ○●
- Danish ○●●
- Dari ●
- Darija ●
- Dhivehi ○●
- Dzongkha ●
- English ○●●
- Estonian ○●●
- Farsi ○●●
- Filipino ○●●
- Finnish ○●●
- French ○●●
- Georgian ○●●
- German ○●●
- Greek ○●●
- Gujrati ●
- Hawaiian ○
- Hebrew ○●●
- Hindi ○●●
- Hungarian ○●●
- Icelandic ○●●
- Indonesian ○●●
- Innu-aimun ○●
- Inuktitut/Inuit ○●
- Irish (Gaelic) ○
- IsiXhosa ●
- IsiZulu (Zulu) ○●●
- Italian ○●●
- iTaukei ●
- Japanese ○●●
- Kannada ○●●

- Kazakh ○●
- Khmer ●
- Korean ○●●
- Latvian ○●●
- Lithuanian ○●●
- Malayalam ●
- Malay/Bahasa Melayu ○●●
- Maltese ○●●
- Manipuri ○●●
- Maori ●
- Marathi ○●
- Mizo ○
- Mongolian ●
- Nederlands/Dutch ○●●
- Nepali ○●●
- Norwegian ○●●
- Odia ○●●
- Papiamentu ○●
- Pashto ●
- Polish ○●●
- Portuguese ○●●
- Portuguese (Brazilian) ○●●
- Punjabi ○●●
- Romanian ○●●
- Russian ○●●
- Rwandan/Kinyarwanda ●
- Sardinian ○
- Sateré-Maué ●
- Serbian ○●
- Sesotho ●
- Setswana ●
- Seychellois Creole ●
- Shona ●
- Sinhala ○●
- Slovak ○●●
- Slovenian ○●●
- Spanish ○●●
- Swahili ○●●
- Swedish ○●●
- Tagalog ●
- Tamil ○●●
- Telugu ●
- Thai ○●●
- Turkish ○●●
- Ukrainian ○●●
- Urdu ○●●
- Uzbek ●
- Vietnamese ●
- Visayan/Bisaya ○●
- Waray ●
- Welsh ○
- Yup'ik ○



Key

- Keytag(s) produced in this language
- IP #1 is published in this language
- Basic Text is published in this language
- Recovery meeting, PSA, website, helpline, or local outreach occurs in this language

This color indicates the countries where there are no NA meetings.

Translations play a huge role in growing NA.
 NA literature is translated by local translation committees, or LTCs, made up of committed members who are native speakers. NA World Services supports the LTC, coordinates professional services, and publishes translated materials.